

AiM Infotech

Car/bike accelerometer Race Studio 3 configuration

Release 1.00



1

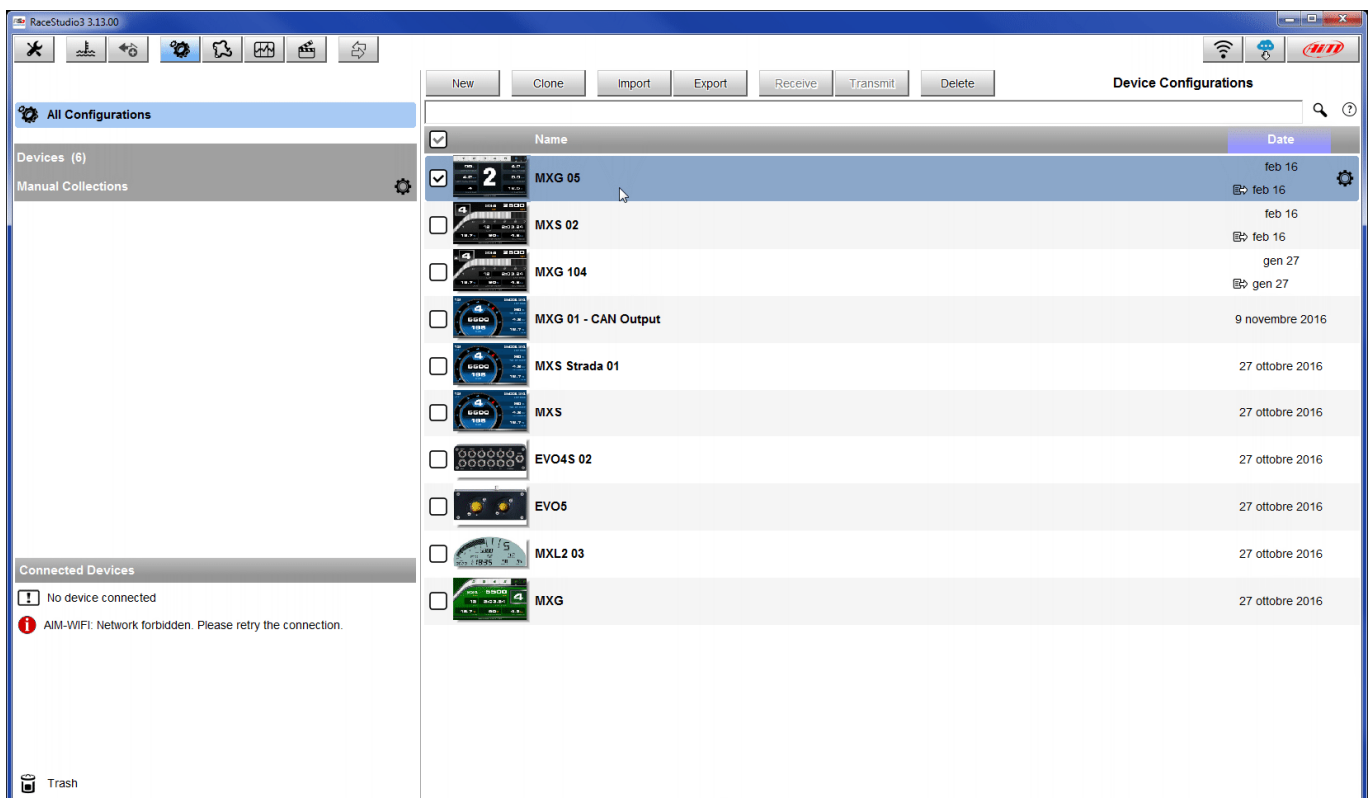
Introduction

When the accelerometer is physically connected to a channel of your device it need to be loaded in the device configuration using AiM configuration software. In this datasheet it is loaded in using **Race Studio 3** software.

2

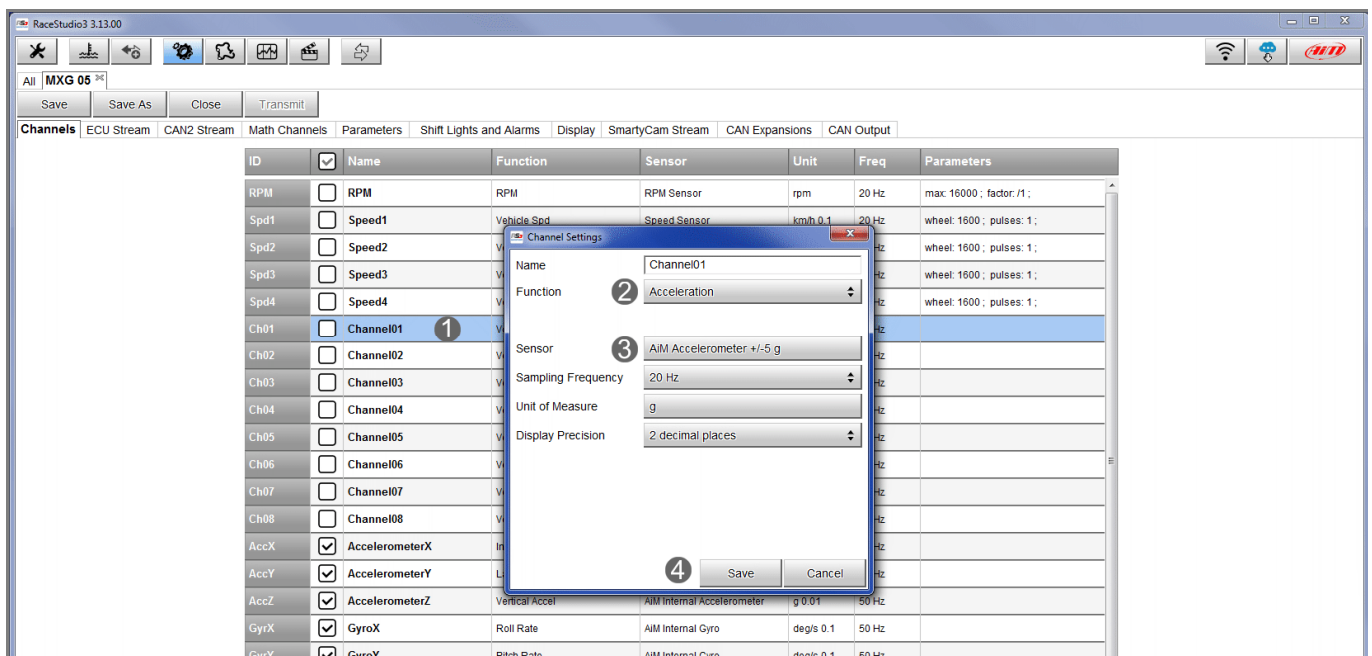
Race Studio 3 configuration

To load the sensor in the device configuration run the software and select the configuration the sensor is loaded on (in the example MXG 05):



The system enters "Channels" layer:

- select the channel where to set the sensor on – in the example channel 1 (1) – and fill in the panel that shows up
- select the function "Acceleration" and choose among :
 - Inline acceleration
 - Lateral Accel
 - Vertical Accel
 - Acceleration – as in the example (2)
- select the sensor: "AiM accelerometer ±5g" (3)
- press "Save" (4)



The sensor is set on the desired channel. Press "Transmit".

